



Sparkley

ULTIMATE PVC LAMIANTES



BEYOND

... a class apart



ANTI BACTERIAL
100% GERM FREE



MANUAL
POST FORMING



90° BEND



NON TOXIC



WATER
RESISTANT

Thickness - 1.2mm



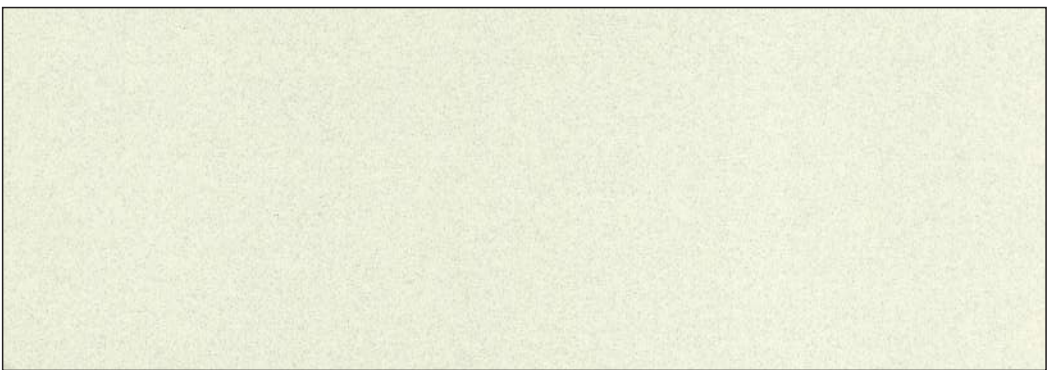
A 212

Thickness - 1.2mm



A 208

Thickness - 1.2mm



A 203

Thickness - 1.2mm



A 217

Thickness - 1.2mm



A 213

Thickness - 1.2mm



A 209





ANTI BACTERIAL
100% GERM FREE



MANUAL
POST FORMING



90° BEND

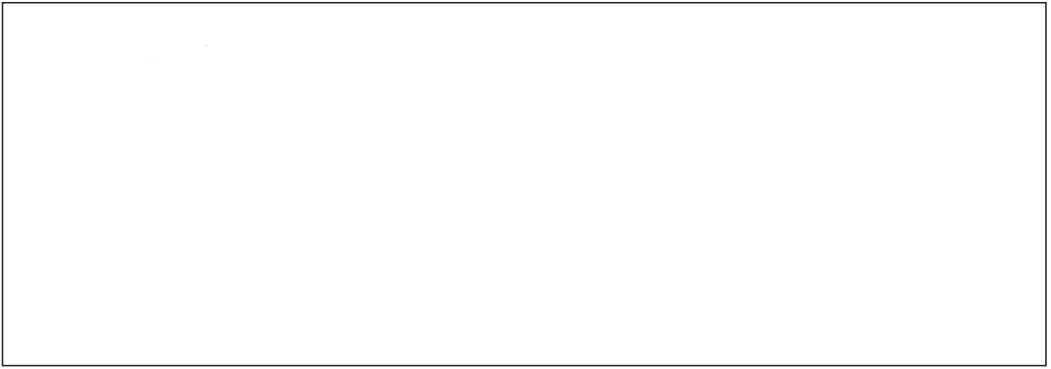


NON TOXIC



WATER
RESISTANT

Thickness - 1,5mm



A 115

Thickness - 1,5mm



A 116

Thickness - 1,2mm



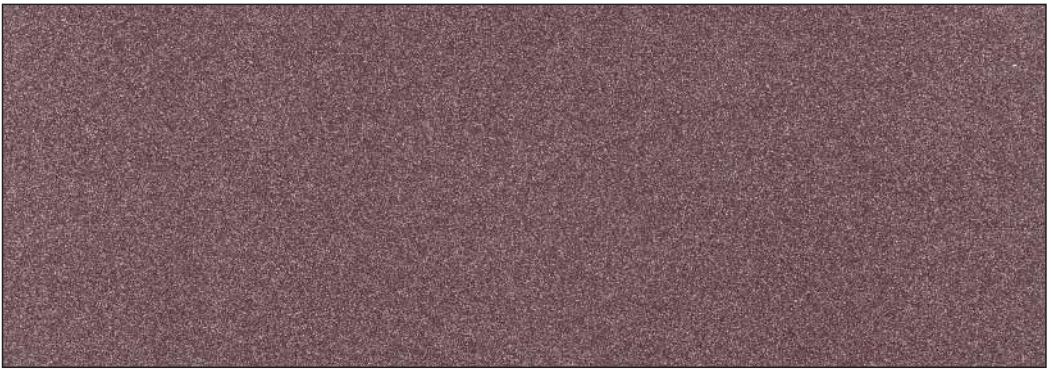
A 215

Thickness - 1,2mm



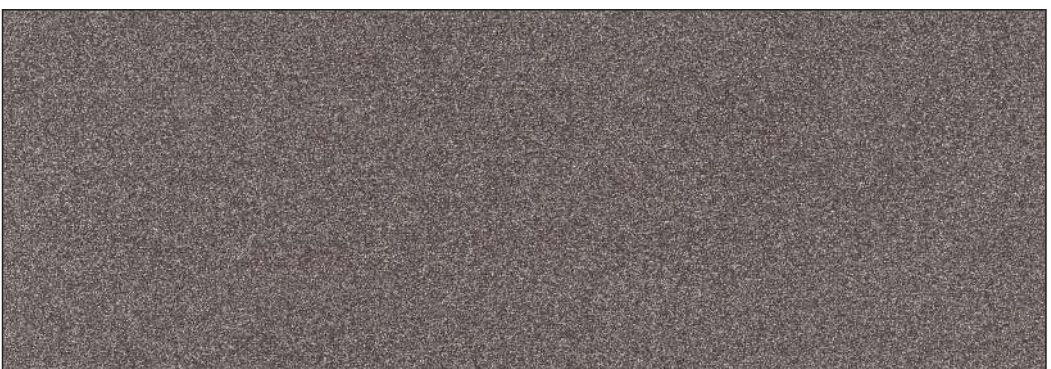
A 214

Thickness - 1,2mm



A 216

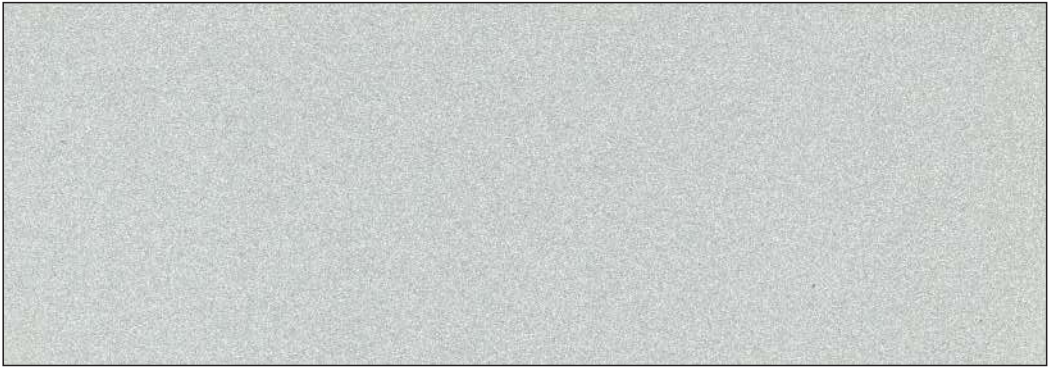
Thickness - 1,2mm



A 207



Thickness - 1.2mm



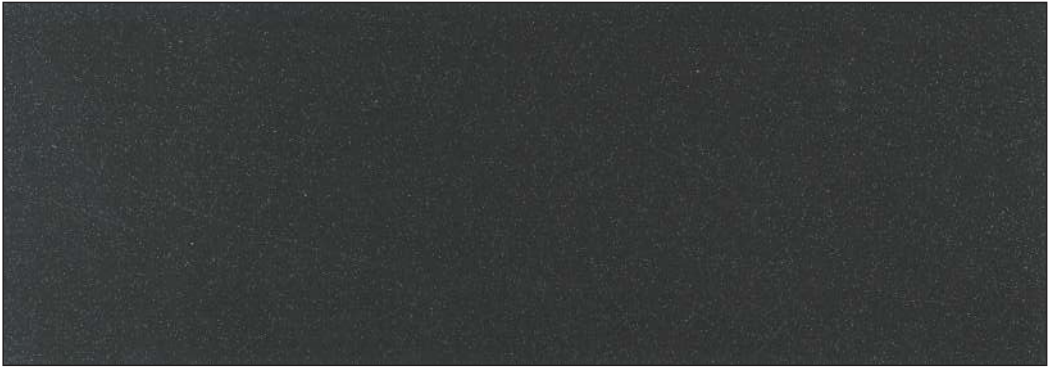
A 210

Thickness - 1.2mm



A 211

Thickness - 1.2mm



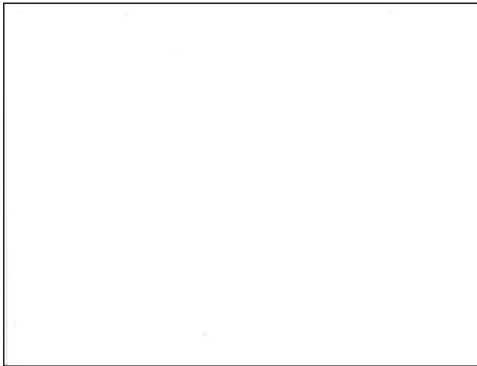
A 218

Thickness - 1.2mm

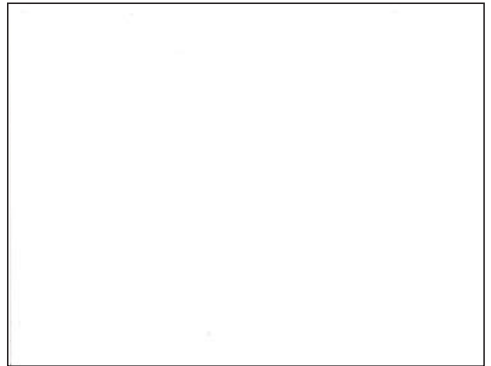


A 206

Thickness - 1.2mm



A 204



A 205

Thickness - 1.2mm



A 201



A 202

LIMITED WARRANTY

BEYOND products are reasonably free of defects and properly handled and fabricated will comply within reasonable deviations to applicable manufacturing specifications.

Clients are advised to inspect products thoroughly prior to installation BEYOND'S warranty will not cover defects and non-compliance from and or otherwise attributable to any other causes including without limitation

- Improper handling/transportation/storage of the products
- Improper installation of the products
- Improper or unintended usage of the products
- Lack of or improper maintenance of the products
- Exposure of the products to extreme temperatures
- unauthorized alternation to the products
- Outdoor applications

FURTHER INFO & SAMPLE REQUESTS

Visit our website www.beyondlaminates.com for more information or to request for laminate samples

- **NO GUARANTEE & NO EXCHANGE IN ANY CIRCUMSTANCES.**
- **THERE CAN BE COLOUR VARIATION IN MATERIAL FROM DIFFERENT BATCHES.**
- **IT IS ADVISED TO USE SAME BATCH MATERIAL TO AVOID COLOUR VARIATIONS.**
- **ACTUAL COLOUR OF THE LAMINATE SHEET MAY VARY FROM THIS BROCHURE.**

Bonding of laminate under high humidity, plywood with high moisture content, ply with uneven surface, inferior quality adhesive and insufficient pressure may lead to delamination / bubbles in between ply and laminate.

Any type of delamination or bubble after applying the sheet will not be entertained as the problem arises due to lack of pressing (pressure) during sticking (application) process.

DISCLAIMER

The information provided in this catalog is for reference and serves as a guide only.

BEYOND does not warrant the accuracy and completeness of this information nor guarantee any of the properties of the product set out here.

Suitability of design and application for use to be determined by the client in consultation with its professional advisers.

BEYOND reserves the right to amend or update product description at any time. BEYOND reserves the right to determine that the alleged defect complained about is insubstantial or trivial BEYOND is not liable for any damage arising from or related to reliance on this catalog.

The intellectual property in this catalog belongs to BEYOND and its manufacturers.

Full size image of laminate sample pieces in this catalog are available for download on our website.

Clients should download the image online to view the laminate sheet in its entirety or request for a bigger sample.

COLLECTION

Available in

Size - 2440mm X 1220mm

Thickness - 1.2mm / 1.5 mm

APPLICATIONS

- Kitchen • Worktops • Tables • Doors • Shelves • Cabinets • Trolleys
- Bathroom • Worktops • Shelves • Cabintes
- Furniture
- Healthcare • Wall Lining and Horizontal Surfaces • Cubicles • Lockers • Cabinets • Trolleys
- Commercial
- Hospitality & Restaurant • Tables • Counter Tops • Doors • Cubicles • Lockers • Cabinets
- Wall Cladding & Partition

GENERAL USE & CARE GUIDE

BEYOND laminates are manufactured with aesthetics and durability in mind. when used as recommended and with appropriate care, our laminates will last through the years. BEYOND laminates are easy to maintain